



Remote Sensing



Geoinformation



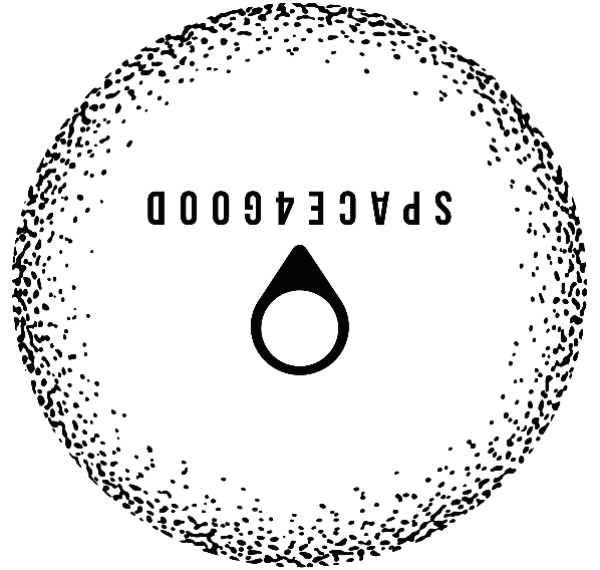
Artificial Intelligence




# Geospatial Innovation for Social & Environmental Impact



*"Space Technology for Social and Environmental Impact"*



**MotherShip**  
**Missions**  
 The Big Blue



Elke Sauter  
[elke@space4good.com](mailto:elke@space4good.com)



- Founded in 2017 at the European Space Agency BIC
- 10 FTE & network of freelancers
- dual experts w/ sectoral knowledge
  - Located at the Hague Humanity Hub
- Global customer & partner network
- Open Innovation Supporter



Space4Good Introduction | 3



## MotherShip Missions

We are two organisations with an interest in emerging technologies, **early stage innovation** and "for good". With joint forces we worked on a number of hackathons and created the **coders movement** MotherShip. MotherShip is a community of coders organising and working on prototypes with artificial intelligence and space technology for vulnerable landscapes.



<https://mothershipmissions.com/>

# The Big Blue

## Mission #3



provincie HOLLAND  
ZUID



## Past Missions

Choose your landscape, plant your flag.

Choose your landscape, plant your flag.

Choose your landscape, plant your flag.

“detect sand theft on beaches, sand dredging by boat or other illegal sand mining activities”

opernicus hackathons MOTHERSHIP

**The Big Blue**

UCLouvain

SANDSTORES

**Tracking illegal sand networks**

Challenge 2:

“track suspended sediments in coastlines & estuaries of RCCR sites”

opernicus hackathons MOTHERSHIP

**The Big Blue**

RAISING CORAL COSTA RICA  
A Human-Coral Symbiosis

**Coral Reef S.O.S.**

Challenge 3:

“use satellite imagery to refine the current topography (30m SRTM data) to improve the flood impact maps”

# The Big Blue

AN INITIATIVE OF THE NETHERLANDS RED CROSS

## 3D mapping for inundation

Challenge 2:

operius hackathons



MOTHERSHIP



## Challenge Owners



SandStories



SANDLINKS



UCLouvain



Raising Coral CR

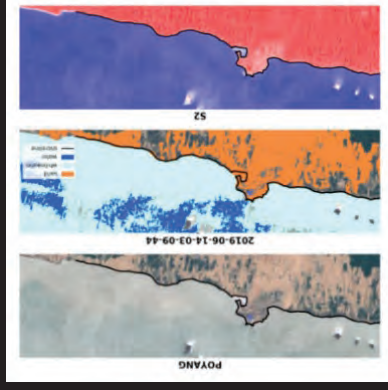


510 Red Cross



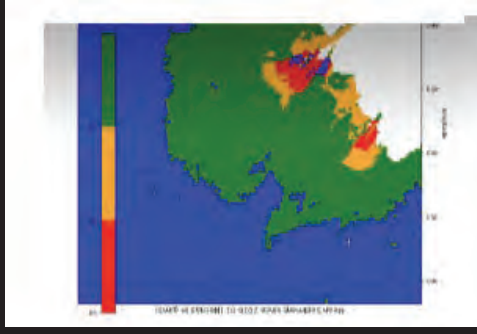
Time series shoreline analysis

### Sahara



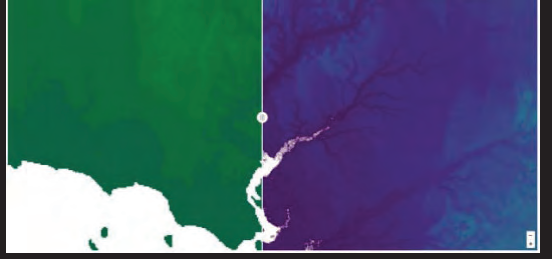
Sedimentation predictor

### Coral Ladies



High-resolution (10m) DEM

### Flood Riders



## Team Output

C4ADS



GISEMC



Deltares



Archipelagos Institute Marine Cons.



## Mentors

**IGNITION PROGRAM**  
 business incubation centre Noordwijk  
**eesa**

**additional invitation**

**Prizes & Follow Up**

**overall winner**

**2k per challenge**

**6.000 Euro in Cash Prizes**

**Win a seat in the Copernicus accelerator**

**MotherShip Medium**

Improving the description of satellite images using GIS data  
 Copernicus  
 09/03/2018 10:00:00  
 In a time of constant growth of data flows change to satellite imagery, has become a necessary to find alternatives to optimize their management. The article offers a way to solve this issue by using an approach based on the different types of information contained in these images, with the ultimate goal of improving object detection algorithms' results.

**Copernicus Services**

**Copernicus Data and Information Access Services (DIAS)**

**eesa**

## Next Events

Choose your landscape, plant your flag.

**Coder Mission #4**

Sound Jungle



MOTHERSHIP

Choose your landscape, plant your flag.

**Meetup & Discovery Workshop**

April 15th 12:00 CET



MOTHERSHIP

**DEMO DAY**

May 08 2020 | 17:30-20:00 CET  
Online Event



WorldStartup AI LAB CHALLENGE EUROPEAN UNION MOTHERSHIP opernicus hackathons



*“Space Technology for Social and Environmental Impact”*



Reach Us

[www.space4good.com](http://www.space4good.com)

✉ [elke@space4good.com](mailto:elke@space4good.com)

📍 The Humanity Hub  
Fluwelen Burgwal 58, 2511 C  
Den Haag, The Netherlands